

## A. Install the upgrading software

Download the latest version of MOZA Assistant for Windows/Mac.

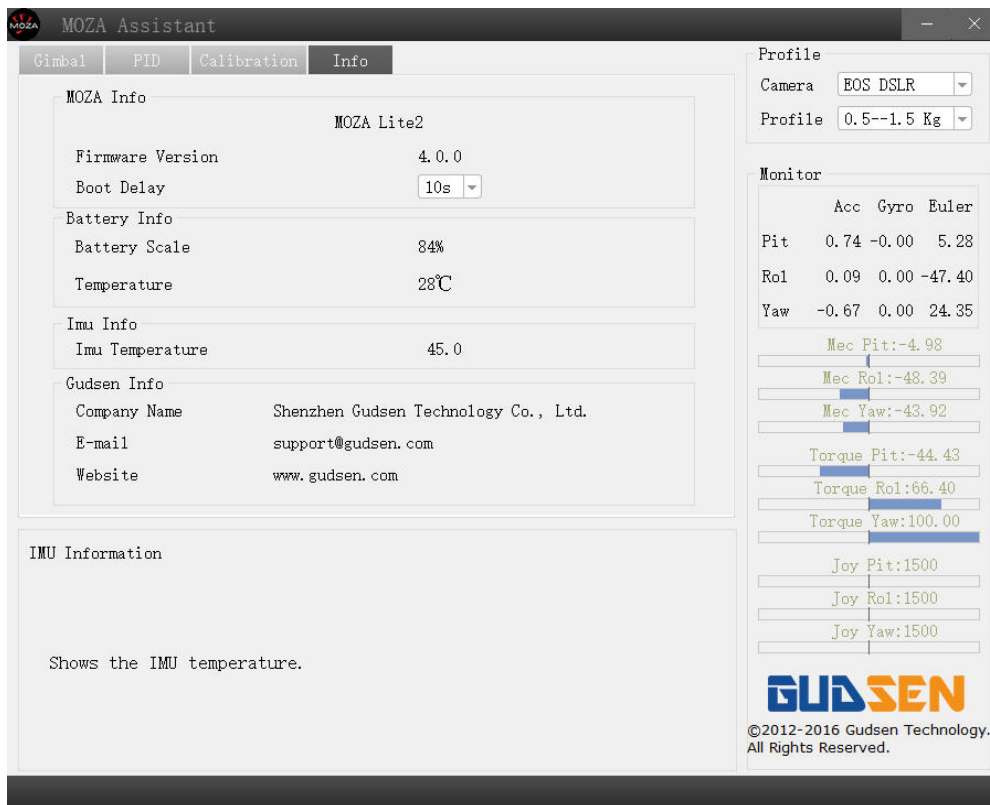
Windows:

Please install the attached drive for the first time use.

Mac:

If you use the Mac system, please follow the guide:

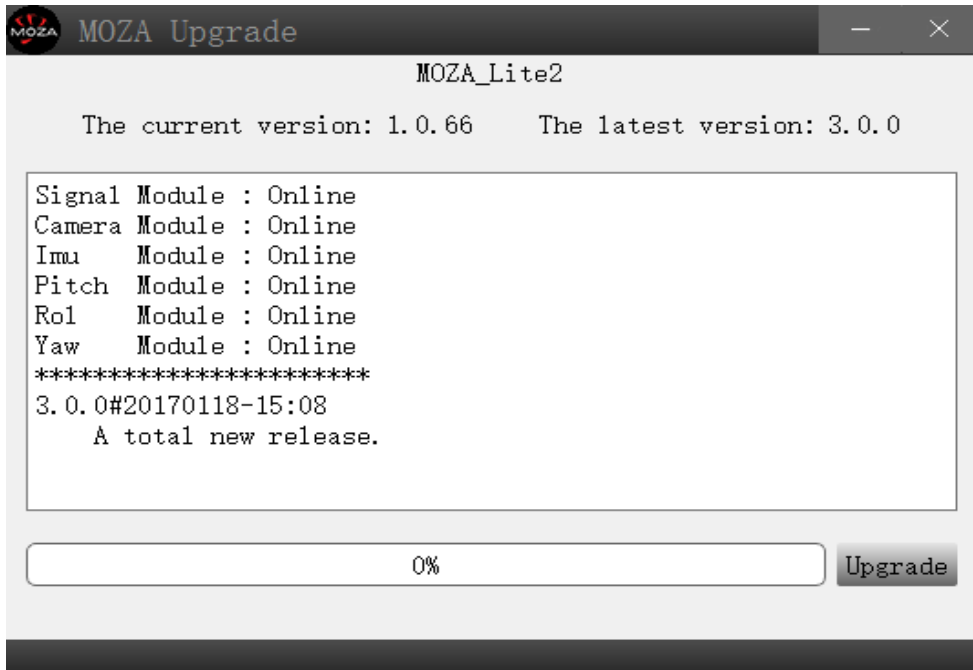
Turn on Lite 2 ,connect USB iwth PC, open Moza assistant system (info interface), then set Bootdelay to 10s



## B. Firmware Upgrade

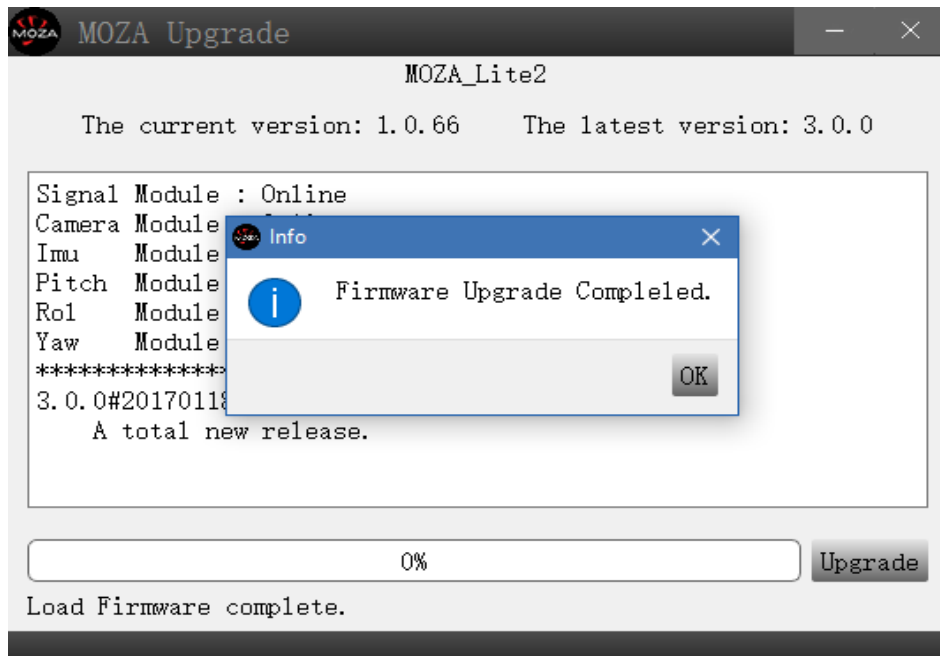
1. Run the MOZA Assistant software (Windows/Mac), make sure your computer is connect to internet during the upgrade
2. Turn on the MOZA Lite2 gimbal

3. Now you should be able to enter to the upgrade interface:



Notice: If your Moza lite 2 or Moza pro is version 2016, when upgrade, firmware version will be abnormal in the system, it will not affect the system upgraded.

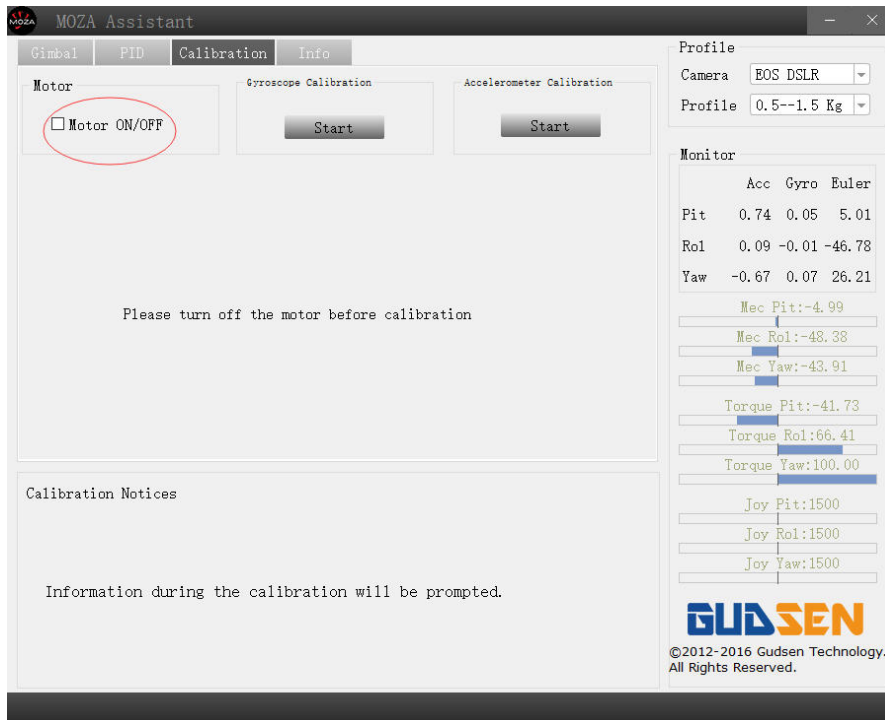
4. Click the button of upgrade, the MOZA Assistant will automatically download the latest firmware and start to upgrade. A message will pop out as below after upgrading is done. Turn off the gimbal once your upgrade is done.



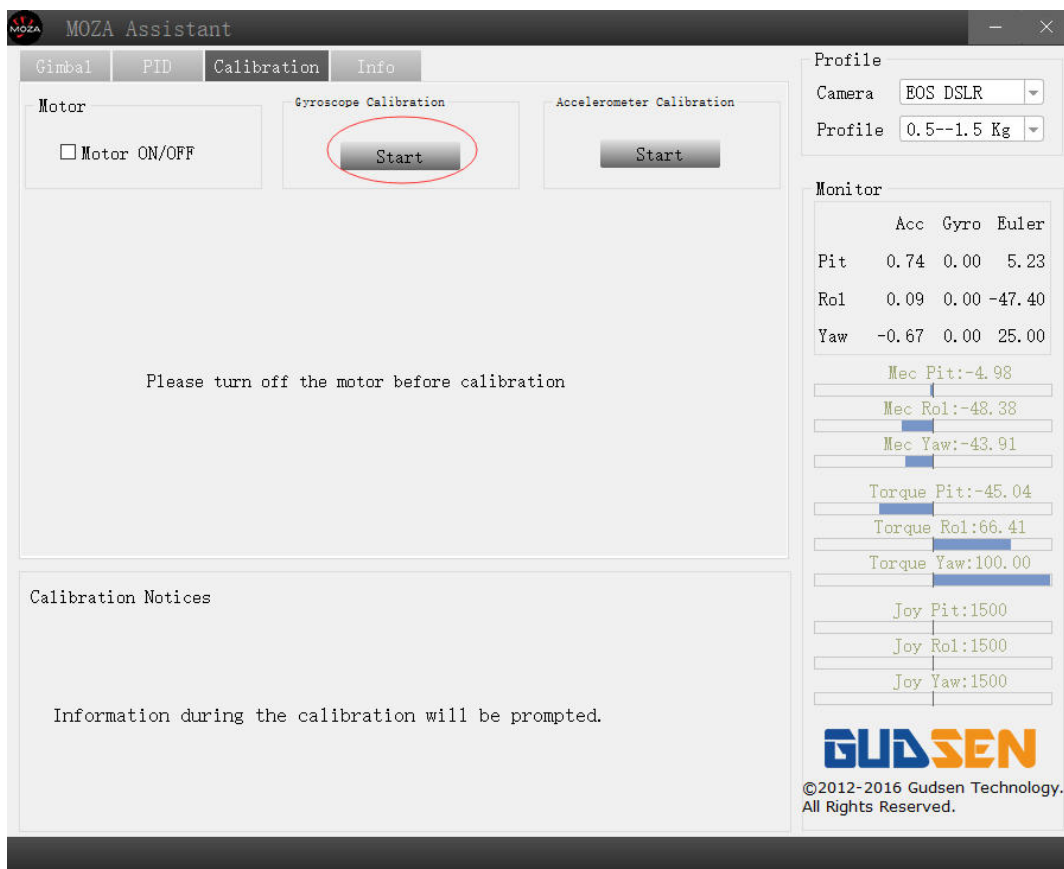
### C. Simple Gyro Calibration:

1. Long press the On/Off button to turn on the gimbal;
2. Plug in USB cable first and then open the MOZA Assistant;

3. Enter the IMU calibration sub-interface and click “Motor On/Off”;



4. Place the MOZA Lite2 gimbal on a sturdy vibration-free surface;
5. Click “Start” on the gyroscope calibration interface. The computer screen will show “success” after the calibration is finished.



#### D. Upgrade Thumb Controller Firmware

Notes: If your thumb controller software version is less than 2.0.0, you can only use the DFU upgrade. Please see the Thumb DFU upgrade Guide (only for thumb software version less than 2.0.0).

- 1 Turn off the thumb controller, hold the Menu button



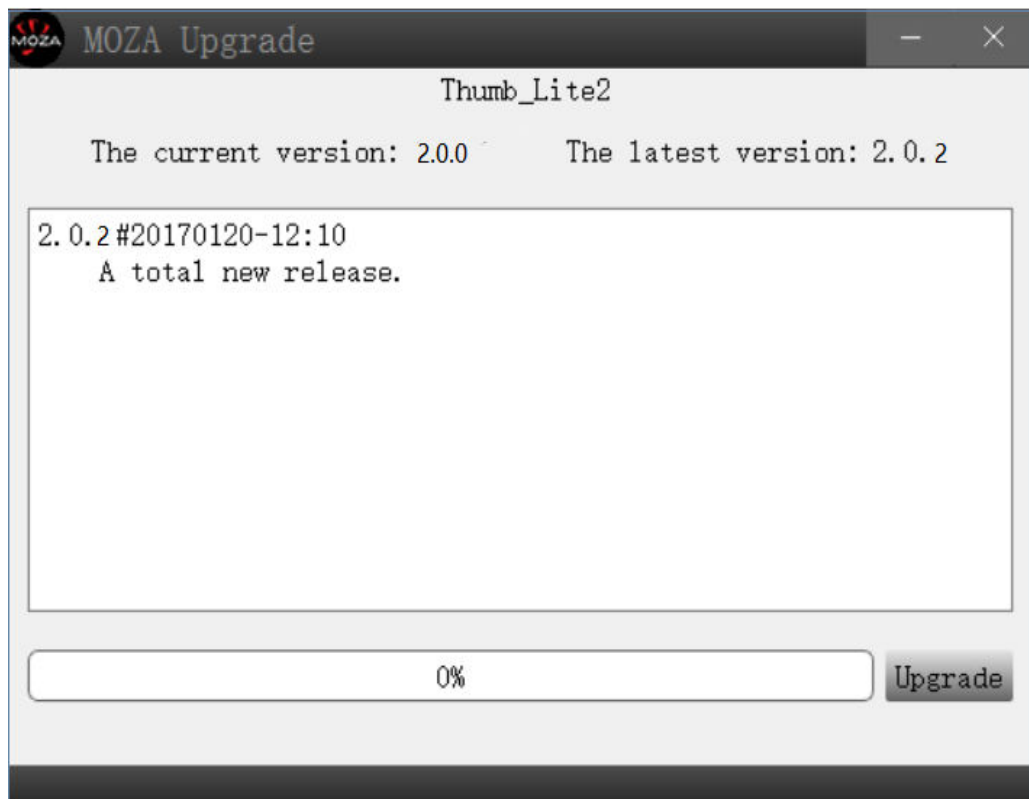
- 2 Plug in the USB cable, the "connecting" message shows on the OLED screen



3 Open the “MOZA Assistant” software on your computer, the upgrade interface pops up, click upgrade.



4 Upgrade is done



**Notes:**

1. Network connection is required to download the firmware. Keep network connected during the upgrading;
2. To avoid upgrading failure, please do not turn off the gimbal or unplug the USB cable during the upgrading;
3. A simple gyroscope calibration is required after the upgrading is done;
4. If upgrading could not proceed, please try it again. If it still does not work, please contact [support@gudsen.com](mailto:support@gudsen.com).